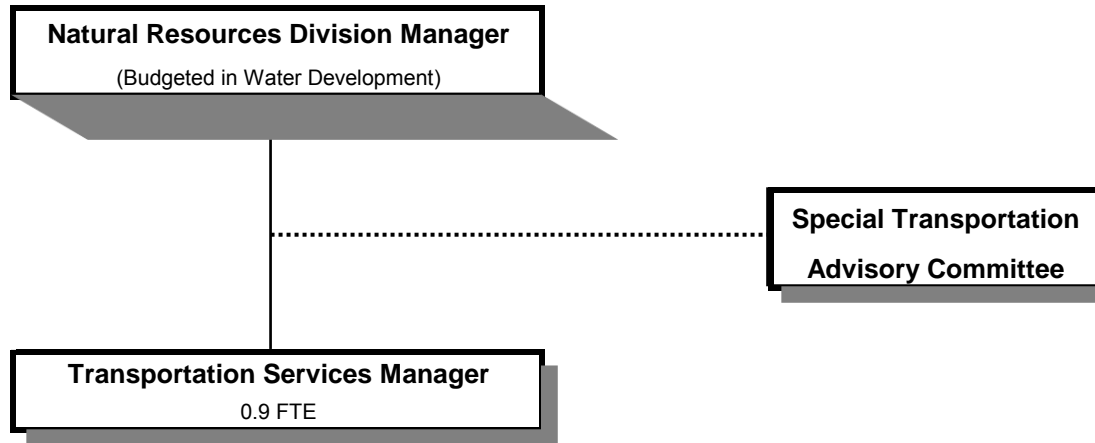


TRANSPORTATION SERVICES



Douglas County, Oregon
 General Fund
 Transportation Services (4060)

	<u>Actual FY 10-11</u>	<u>Actual FY 11-12</u>	<u>Actual FY 12-13</u>	<u>Revised Budget FY 13-14</u>	<u>Proposed FY 14-15</u>	<u>Approved FY 14-15</u>	<u>Adopted FY 14-15</u>
<u>RESOURCES</u>							
Beginning Balance (Use Restricted)							165,000
Intergovernmental Revenues							1,012,783
Charges and Other Revenues							2,450
Total Revenue							1,015,233
TOTAL RESOURCES							1,180,233
<u>REQUIREMENTS</u>							
Personnel Services							104,671
Materials & Services							1,093,032
TOTAL REQUIREMENTS							1,197,703
<i>Use of General County Resources</i>							
							17,470
Staffing FTE							
							0.90

Douglas County, Oregon
 General Fund
 Transportation Services

Department Detail

			Actual	Actual	Revised	Proposed	Approved	Adopted
			FY 11-12	FY 12-13	Budget	FY 14-15	FY 14-15	FY 14-15
					FY 13-14			
100-4060-3250-50	State/Fed-Transportation Dept	Section 5310 Mobility Mgmt						66,988
100-4060-3250-51	State/Fed-Transportation Dept	Section 5310 Purchased Svcs						345,973
100-4060-3250-56	State/Fed-Transportation Dept	Section 5311 Small Cities & Rural						354,513
100-4060-3350-50	State-Transportation Dept	Special Transport Operations						228,116
100-4060-3350-53	State-Transportation Dept	Special Transport - STO						17,193
100-4060-3875-00	Expense Reimbursements	General						2,450
Total Revenue								1,015,233
100-4060-4000-00	Regular Employees	General						42,768
100-4060-4030-00	Temporary Employees	General						18,060
100-4060-4500-00	PERS	General						16,225
100-4060-4510-00	Social Security	General						4,653
100-4060-4520-00	Workers' Compensation	General						426
100-4060-4530-00	Medical and Dental Insurance	General						22,113
100-4060-4540-00	Unemployment	General						426
Total Personnel Services								104,671
100-4060-5300-00	Health & SS Contracts	General						97,768
100-4060-5335-81	Senior Service Contracts	Special Transportation-STO						17,193
100-4060-5335-82	Senior Service Contracts	Special Transportation-Provi						228,116
100-4060-5335-85	Senior Service Contracts	Transportation Providers						27,814
100-4060-5335-87	Senior Service Contracts	Transportation Purchased Svcs						345,973
100-4060-5335-91	Senior Service Contracts	Transportation 5311 Operations						354,513
100-4060-6290-00	Software Purchases	General						1,000
100-4060-6290-10	Software Purchases	Software Updates/Maintenance						8,030
100-4060-6295-00	Equipment-Noninventory	General						2,000
100-4060-6299-00	Other Materials and Supplies	General						600
100-4060-6450-02	Equipment/Vehicle Rent	Copy Machines						30
100-4060-6500-00	Interdept Vehicle Expense	General						1,000
100-4060-6510-00	Equip/Vehicle Main & Repair	General						100
100-4060-6510-02	Equip/Vehicle Main & Repair	Equipment Service Contracts						50
100-4060-6680-01	Communication	Telephone						2,500
100-4060-6720-01	Fire/Liability Insurance	Liability Insurance Interdept Chg						275
100-4060-7300-00	Advertising/Publicity	General						3,000
100-4060-7400-00	Office Supplies and Expenses	General						300
100-4060-7410-00	Postage	General						20
100-4060-7560-00	Conventions, Schools, Seminars	General						1,800

Douglas County, Oregon
 General Fund
 Transportation Services

			Actual	Actual	Revised	Proposed	Approved	Adopted
			FY 11-12	FY 12-13	Budget	FY 14-15	FY 14-15	FY 14-15
					FY 13-14			
100-4060-7580-00	Dues and Memberships	General						750
100-4060-7800-00	Legal Publication and Printing	General						200
Total Materials and Services								1,093,032
Total Expenditures								1,197,703

PERSONNEL SERVICES

	Actual FTE FY 11-12	Actual FTE FY 12-13	Revised Budget FTE FY 13-14	Budget FY 14-15	
				FTE	Amount
Transportation Systems Manager				0.90	42,768
Temporary					18,060
PERS		25.96%, 28.36%			16,225
Social Security		7.65%			4,653
Worker's Compensation		0.70%			426
Unemployment		0.70%			426
Medical & Dental Insurance		\$1,365/mo			22,113
Total Personnel Services					<u>104,671</u>