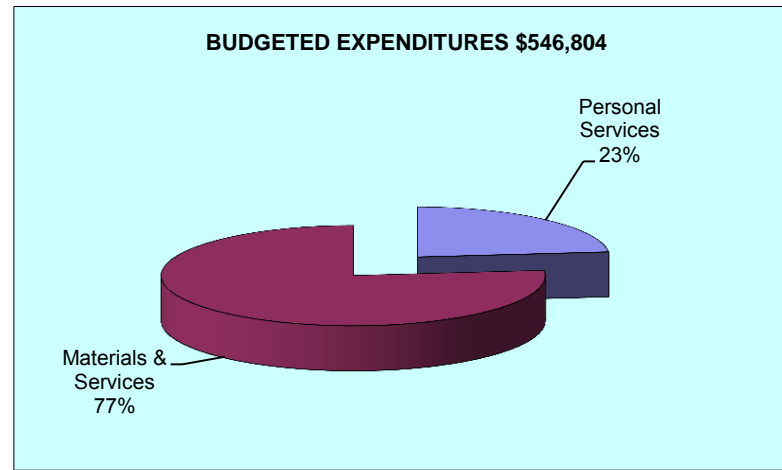
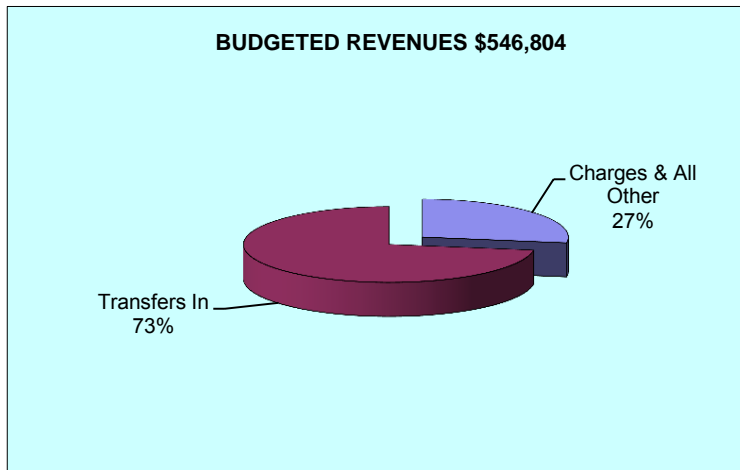
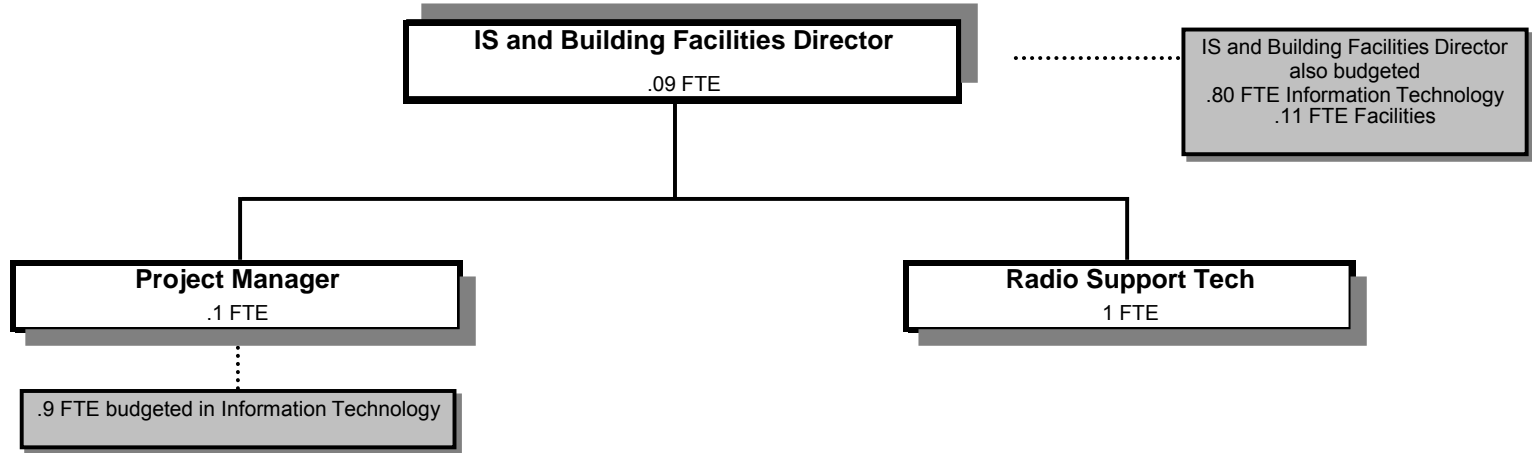


Radio System



Douglas County, Oregon
Public Safety Fund
Radio System (1900)

	Actual <u>FY 10-11</u>	Actual <u>FY 11-12</u>	Actual <u>FY 12-13</u>	Revised Budget <u>FY 13-14</u>	Proposed <u>FY 14-15</u>	Approved <u>FY 14-15</u>	Adopted <u>FY 14-15</u>
<u>RESOURCES</u>							
Charges and Other Revenues	128,420	122,748	116,423	127,500	150,000	150,000	150,000
Intergovernmental Revenues	25,851						
Transfers In - General Fund		67,835					
Transfers In - Public Works	<u>223,719</u>	<u>348,576</u>	<u>340,000</u>	<u>327,940</u>	<u>396,804</u>	<u>396,804</u>	<u>396,804</u>
Total Revenue	<u>377,990</u>	<u>539,159</u>	<u>456,423</u>	<u>455,440</u>	<u>546,804</u>	<u>546,804</u>	<u>546,804</u>
<u>REQUIREMENTS</u>							
Personnel Services	52,949	63,147	113,169	123,962	127,804	127,804	127,804
Materials & Services	408,184	445,817	272,688	331,478	419,000	419,000	419,000
Capital Outlay		<u>8,995</u>	<u>66,633</u>				
Total Expenditures	<u>461,133</u>	<u>517,959</u>	<u>452,490</u>	<u>455,440</u>	<u>546,804</u>	<u>546,804</u>	<u>546,804</u>
<i>Resources (Under) Requirements</i>							
<i>Use of Communications 911 & Dispatch Revenues*</i>	(83,143)						
<i>Resources Over Requirements Carryforward</i>							
		21,200	3,933	-	-	-	-
Staffing FTE		1.00	1.19	1.19	1.19	1.19	1.19

*Radio System combined with Communications 911 & Dispatch FY11-12 and prior, separated FY12-13.

Douglas County, Oregon
Public Safety Fund
Radio System

Department Detail

			Actual	Actual	Revised	Proposed	Approved	Adopted
			FY 11-12	FY 12-13	Budget	FY 14-15	FY 14-15	FY 14-15
					FY 13-14			
220-1900-3030-00	Restitution	General	0	300	0	0	0	0
220-1900-3800-01	Interest	General Investments	0	106	0	0	0	0
220-1900-3820-50	Rents, Leases and Royalties	Radio Facility	122,748	106,629	127,500	150,000	150,000	150,000
220-1900-3879-00	Miscellaneous	General	0	90	0	0	0	0
220-1900-3879-90	Miscellaneous	Subrogating Claim Recovery	0	9,298	0	0	0	0
220-1900-3900-01	Transfers In	General Fund	67,835	0	0	0	0	0
220-1900-3900-11	Transfers In	Public Works	348,576	340,000	327,940	396,804	396,804	396,804
Total Revenue			539,159	456,123	455,440	546,804	546,804	546,804
220-1900-4000-00	Regular Employees	General	41,209	72,991	77,753	80,339	80,339	80,339
220-1900-4500-00	PERS	General	10,476	18,376	24,163	21,425	21,425	21,425
220-1900-4510-00	Social Security	General	3,070	5,332	5,948	6,146	6,146	6,146
220-1900-4520-00	Workers' Compensation	General	144	255	272	281	281	281
220-1900-4530-00	Medical and Dental Insurance	General	7,462	14,958	15,437	19,492	19,492	19,492
220-1900-4540-00	Unemployment	General	786	1,257	389	121	121	121
Total Personnel Services			63,147	113,169	123,962	127,804	127,804	127,804
220-1900-5099-00	Other Professional Services	General	67,928	6,096	15,000	15,000	15,000	15,000
220-1900-5199-10	Other Technical Services	Pacific Power Line Charge	31,176	31,630	35,000	35,000	35,000	35,000
220-1900-6065-00	Fuel and Oil	General	26,348	25,376	32,000	32,000	32,000	32,000
220-1900-6065-03	Fuel and Oil	Propane	1,649	100	500	500	500	500
220-1900-6295-00	Equipment-Noninventory	General	2,403	11,112	2,500	32,500	32,500	32,500
220-1900-6299-00	Other Materials and Supplies	General	1,992	0	0	0	0	0
220-1900-6400-00	Land and Building Rent	General	152,014	150,131	157,829	180,201	180,201	180,201
220-1900-6500-00	Interdept Vehicle Expense	General	0	3,174	4,200	4,200	4,200	4,200
220-1900-6510-10	Equip/Vehicle Main & Repair	Comm System M&R	154,939	40,318	80,000	80,000	80,000	80,000
220-1900-6530-00	Software Maintenance	General	5,050	0	0	0	0	0
220-1900-6550-00	Building and Grounds Maint	General	0	0	0	35,000	35,000	35,000
220-1900-6680-13	Communication	Frequency Lease	1,908	0	1,545	1,545	1,545	1,545
220-1900-6720-01	Fire/Liability Insurance	Liability Ins Charges	0	0	0	150	150	150
220-1900-7410-00	Postage	General	410	357	500	500	500	500
220-1900-7550-00	Travel	General	0	819	0	0	0	0

Douglas County, Oregon
 Public Safety Fund
 Radio System

Department Detail

			Actual	Actual	Revised	Proposed	Approved	Adopted
			FY 11-12	FY 12-13	Budget	FY 14-15	FY 14-15	FY 14-15
					FY 13-14			
220-1900-7560-00	Conventions, Schools, Seminars	General	0	3,500	2,000	2,000	2,000	2,000
220-1900-7900-00	Miscellaneous	General	0	75	404	404	404	404
Total Materials and Services			445,817	272,688	331,478	419,000	419,000	419,000
220-1900-8200-00	Furniture and Equipment	General	8,995	64,589	0	0	0	0
220-1900-8200-99	Furniture and Equipment	NonInventory	0	2,044	0	0	0	0
Total Capital Outlay			8,995	66,633	0	0	0	0
Total Expenditures			517,959	452,490	455,440	546,804	546,804	546,804

Douglas County, Oregon
 Public Safety Fund
 Radio System

PERSONNEL SERVICES					
	Actual FTE FY 11-12	Actual FTE FY 12-13	Revised Budget FTE FY 13-14	Budget FY 14-15	
				FTE	Amount
IS and Building Facilities Director		0.09	0.09	0.09	13,149
IS Project Manager		0.10	0.10	0.10	10,531
Radio Sys Communications Tech	1.00	1.00	1.00	1.00	56,659
Total Regular	1.00	1.19	1.19	1.19	80,339
PERS		25.96%, 28.36%			21,425
Social Security		7.65%			6,146
Worker's Compensation		0.35%			281
Unemployment		0.15%			121
Medical & Dental Insurance		\$1,365/mo			19,492
Total Personnel Services					<u>127,804</u>