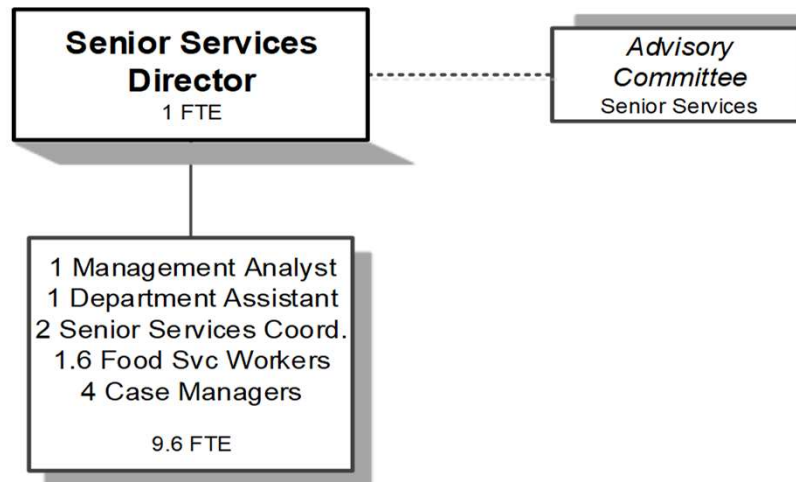


SENIOR SERVICES



Douglas County, Oregon
 Health and Social Services Fund
 Senior Services Division (4050)

Department Overview

	Actual FY 18-19	Actual FY 19-20	Actual FY 20-21	Revised Budget FY 21-22	Proposed FY 22-23	Approved FY 22-23	Adopted FY 22-23
<u>RESOURCES</u>							
<i>Beginning Fund Balance (Use Restricted)</i>		5,135					
Intergovernmental Revenues	1,461,392	1,786,415	1,765,069	1,443,029	1,616,208	1,616,208	1,616,208
Charges and Other Revenues	65,536	55,358	49,582	79,000	43,100	43,100	43,100
Total	1,526,928	1,841,773	1,814,651	1,522,029	1,659,308	1,659,308	1,659,308
<u>REQUIREMENTS</u>							
Personnel Services	664,266	780,909	721,693	794,006	926,849	926,849	934,291
Materials and Services	901,995	993,730	969,742	918,111	959,858	959,858	959,858
Capital Outlay		36,643	61,273				
Transfers Out: General Fund	48,115	48,115	48,115	48,115	48,115	48,115	48,115
Total	1,614,376	1,859,397	1,800,823	1,760,232	1,934,822	1,934,822	1,942,264
<i>Ending Balance (Use Restricted)</i>	5,135						
<i>Use of General County Resources</i>	92,583	17,624	(13,828)	238,203	275,514	275,514	282,956
Staffing FTE	9.30	9.10	9.10	9.10	10.60	10.60	10.60

Douglas County, Oregon
 Health and Social Services Fund
 Senior Services

Department Detail

	Actual	Actual	Revised	Proposed	Approved	Adopted	
	FY 19-20	FY 20-21	Budget	FY 22-23	FY 22-23	FY 22-23	
			FY 21-22				
2070-40-4050-268001	Congregate Senior Meals	28,770	16,576	35,000	19,000	19,000	19,000
2070-40-4050-268002	Home Delivered Senior Meals	20,254	18,947	32,000	18,000	18,000	18,000
2070-40-4050-268010	Seniors Home Care	2,305	2,625	3,000	2,500	2,500	2,500
2070-40-4050-322000	St/Fed Dept of Human Services	0	0	0	41,000	41,000	41,000
2070-40-4050-322001	St/Fed DHS SSD Title 19 Reimb	95,091	95,900	102,801	109,345	109,345	109,345
2070-40-4050-322002	St/Fed DHS OAA IIIB Soc Svcs	138,920	165,674	196,830	192,000	192,000	192,000
2070-40-4050-322003	St/Fed DHS OAA IIIC1 Cong Meal	169,852	234,035	184,140	243,000	243,000	243,000
2070-40-4050-322004	St/Fed DHS OAA IIIC2 Home Delv	153,169	182,428	192,300	262,000	262,000	262,000
2070-40-4050-322005	St/Fed DHS NSIP Cash-in-Lieu	51,703	51,702	51,704	44,962	44,962	44,962
2070-40-4050-322006	St/Fed DHS OAA IIID In-HomeSvc	18,404	12,862	20,000	0	0	0
2070-40-4050-322007	St/Fed DHS OAA IIIE FamilyCare	27,443	20,626	37,900	50,000	50,000	50,000
2070-40-4050-322008	St/Fed DHS OAA IIIE FCG Meals	23,534	20,267	31,500	29,000	29,000	29,000
2070-40-4050-322009	St/Fed DHS VII B ElderAbusePrv	0	3,790	2,400	4,000	4,000	4,000
2070-40-4050-322010	St/Fed DHS Title 19-Home Delv	69,395	81,539	87,000	90,000	90,000	90,000
2070-40-4050-322013	St/Fed DHS FFCRA	118,769	6,251	0	0	0	0
2070-40-4050-322014	St/Fed DHS CARES	284,175	144,746	0	0	0	0
2070-40-4050-322015	St/Fed DHS OAA IIIC2 HDC5	0	87,451	0	0	0	0
2070-40-4050-326100	St/Fed DAS COVID19 CARES	11,821	103,484	0	0	0	0
2070-40-4050-332000	State Dept of Human Services	12,461	32,679	1,786	0	0	0
2070-40-4050-332001	State DHS OR Project Indepndnc	110,170	104,689	100,380	100,632	100,632	100,632
2070-40-4050-332002	State DHS OPI Home Care Worker	332,203	302,802	290,000	285,000	285,000	285,000
2070-40-4050-332003	State DHS OPI Meals	25,402	21,573	23,200	20,000	20,000	20,000
2070-40-4050-332004	State DHS ADRC Options Consing	13,191	11,028	47,788	52,269	52,269	52,269
2070-40-4050-332005	State DHS ADRC Mental Health	30,115	2,633	4,000	0	0	0
2070-40-4050-332007	State DHS ADRC Veterans	88,746	72,910	64,800	93,000	93,000	93,000
2070-40-4050-339500	Local Assistance	11,851	6,000	4,500	0	0	0
2070-40-4050-384xxx	Contributions and Donations	3,644	4,825	2,000	3,600	3,600	3,600
2070-40-4050-387500	Expense Reimbursements	160	0	0	0	0	0
2070-40-4050-387900	Miscellaneous Revenues	225	6,607	7,000	0	0	0
2070-40-4050-387980	Misc Cash Over/Short	0	2	0	0	0	0
Total Revenue	1,841,773	1,814,651	1,522,029	1,659,308	1,659,308	1,659,308	1,659,308

Douglas County, Oregon
Health and Social Services Fund
Senior Services

Department Detail

		Actual	Actual	Revised	Proposed	Approved	Adopted
		FY 19-20	FY 20-21	Budget FY 21-22	FY 22-23	FY 22-23	FY 22-23
2070-40-4050-400000	Regular Employees	415,178	365,328	415,186	491,523	491,523	496,228
2070-40-4050-403000	Temporary Employees	32,046	60,127	31,000	37,600	37,600	37,600
2070-40-4050-450000	PERS	155,354	151,177	188,789	215,335	215,335	217,643
2070-40-4050-451000	Social Security	32,916	31,455	34,134	40,478	40,478	40,839
2070-40-4050-451500	Paid Family & Med Leave Ins	0	0	893	1,058	1,058	1,066
2070-40-4050-452000	Worker's Compensation	3,366	4,240	3,123	3,704	3,704	3,736
2070-40-4050-453000	Unemployment	4,826	2,552	2,677	3,175	3,175	3,203
2070-40-4050-454000	Medical and Dental Insurance	137,223	106,814	118,204	133,976	133,976	133,976
Total Personnel Services		780,909	721,693	794,006	926,849	926,849	934,291
2070-40-4050-509900	Other Professional Services	13,365	10,362	13,430	2,000	2,000	2,000
2070-40-4050-530000	Health & Social Svcs Contracts	26,418	12,840	20,000	25,000	25,000	25,000
2070-40-4050-533505	Senior Food Services Contracts	191,118	180,947	180,000	185,000	185,000	185,000
2070-40-4050-533507	Senior Other Agency Food Svcs	36,767	40,502	16,000	16,000	16,000	16,000
2070-40-4050-533510	Senior Home Delivered Food	245,471	265,489	244,000	258,000	258,000	258,000
2070-40-4050-533525	Senior Legal Services	8,400	16,790	13,000	14,000	14,000	14,000
2070-40-4050-533535	Senior Family Caregiver	1,822	1,988	3,000	3,000	3,000	3,000
2070-40-4050-537010	Home Care Workers Contracts	332,203	302,802	290,000	302,000	302,000	302,000
2070-40-4050-579055	Transp Cost Volunteer Reimb	13,662	18,451	16,900	30,000	30,000	30,000
2070-40-4050-629500	Equipment-Noninventory	3,155	5,672	0	0	0	0
2070-40-4050-629502	Equip-Noninv Computer Rep	0	0	1,800	1,700	1,700	1,700
2070-40-4050-629900	Other Materials and Supplies	3,015	6,911	6,320	7,000	7,000	7,000
2070-40-4050-640000	Land and Building Rent	48,107	48,563	48,896	49,313	49,313	49,313
2070-40-4050-645002	Equipment/Vehicle Copy Mach	471	668	865	955	955	955
2070-40-4050-646000	Software	1,273	1,653	970	8,240	8,240	8,240
2070-40-4050-646002	Software Maintenance	0	121	200	0	0	0
2070-40-4050-650000	Interdept Vehicle Expense	11,447	13,464	13,040	16,640	16,640	16,640
2070-40-4050-651000	Equip/Vehicle Maint & Repair	0	0	110	0	0	0
2070-40-4050-651002	Equip/Vehicle Service Contract	324	81	595	0	0	0
2070-40-4050-668001	Communication Telephone	13,906	12,435	14,830	9,490	9,490	9,490
2070-40-4050-671555	Workers' Comp InterdeptCharges	805	0	0	0	0	0
2070-40-4050-672001	Fire/Liab Interdept Charges	12,500	8,500	4,400	4,500	4,500	4,500
2070-40-4050-680000	Laundry and Dry Cleaning	4,629	4,900	5,300	4,050	4,050	4,050
2070-40-4050-685000	License and Permit Fees	1,920	1,920	2,225	2,275	2,275	2,275

Douglas County, Oregon
Health and Social Services Fund
Senior Services

Department Detail

		Actual	Actual	Revised	Proposed	Approved	Adopted
		FY 19-20	FY 20-21	Budget	FY 22-23	FY 22-23	FY 22-23
				FY 21-22			
2070-40-4050-692000	Awards and Recognitions	0	260	100	470	470	470
2070-40-4050-730000	Advertising/Publicity	1,520	2,035	2,600	2,010	2,010	2,010
2070-40-4050-740000	Office Supplies and Expenses	2,591	2,118	2,080	2,070	2,070	2,070
2070-40-4050-741000	Postage	1,486	1,551	1,745	1,470	1,470	1,470
2070-40-4050-750000	Subscriptions Books & Periodi	409	0	200	450	450	450
2070-40-4050-755080	Travel Mileage Reimbursement	8,097	2,899	1,960	2,485	2,485	2,485
2070-40-4050-756000	Conventions Schools Seminars	2,777	230	6,600	4,910	4,910	4,910
2070-40-4050-756005	Conv Schools Sem Volunteers	0	0	0	100	100	100
2070-40-4050-758000	Dues and Memberships	5,477	5,590	6,320	6,080	6,080	6,080
2070-40-4050-780000	Legal Publication and Printing	0	0	125	150	150	150
2070-40-4050-785000	Pre-employment Testing	595	0	500	500	500	500
Total Materials and Services		993,730	969,742	918,111	959,858	959,858	959,858
2070-40-4050-820000	Furniture and Equipment	6,793	0	0	0	0	0
2070-40-4050-830000	Vehicles and Heavy Equipment	29,850	61,273	0	0	0	0
Total Capital Outlay		36,643	61,273	0	0	0	0
2070-40-4050-950100	Transfers To General Fund	48,115	48,115	48,115	48,115	48,115	48,115
Total Other Requirements		48,115	48,115	48,115	48,115	48,115	48,115
Total Expenditures		1,859,397	1,800,823	1,760,232	1,934,822	1,934,822	1,942,264

Douglas County, Oregon
Health and Social Services Fund
Senior Services Division

PERSONNEL SERVICES					
	Actual	Actual	Revised	Budget	
	FTE	FTE	FTE	FY 22-23	
	FY 19-20	FY 20-21	FY 21-22	FTE	Amount
Senior Services Director	1.00	1.00	1.00	1.00	83,085
Senior Services Case Manager	4.00	4.00	4.00	4.00	194,663
Senior Services Coordinator	1.00	1.00	1.00	2.00	79,736
Food Service Worker	1.10	1.10	1.10	1.60	44,397
Management Analyst 2	1.00	1.00	1.00	1.00	63,066
Department Assistant	1.00	1.00	1.00	1.00	31,281
Total Regular	9.10	9.10	9.10	10.60	496,228
Temporary					37,600
PERS		41.68%, 49.08%			217,643
Social Security		7.65%			40,839
Paid Family & Med Leave Ins		0.20%			1,066
Worker's Compensation		0.70%			3,736
Unemployment		0.60%			3,203
Medical & Dental Insurance		Varied			133,976
Total Personnel Services					934,291