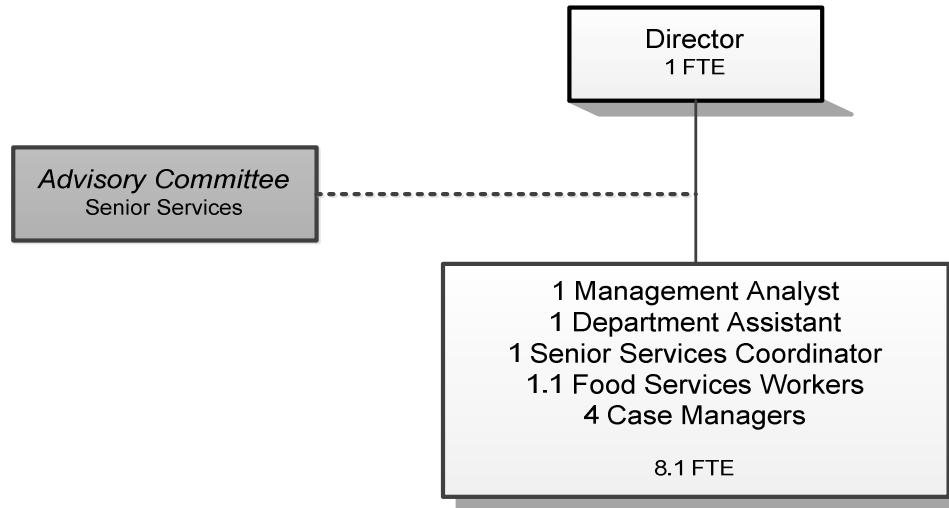


SENIOR SERVICES



Douglas County, Oregon
 Health and Social Services Fund
 Senior Services Division (4050)

	Actual FY 15-16	Actual FY 16-17	Actual FY 17-18	Revised Budget FY 18-19	Proposed FY 19-20	Approved FY 19-20	Adopted FY 19-20
<u>RESOURCES</u>							
Beginning Balance (Use Restricted)				2,500			
Intergovernmental Revenues	1,270,281	1,241,471	1,333,988	1,445,440	1,476,250	1,476,250	1,476,250
Charges and Other Revenues	64,862	59,780	64,054	66,200	58,290	58,290	58,290
Total	1,335,143	1,301,251	1,398,042	1,514,140	1,534,540	1,534,540	1,534,540
<u>REQUIREMENTS</u>							
Personnel Services	568,625	571,717	596,146	679,817	720,796	720,796	720,796
Materials and Services	865,211	817,927	839,803	925,875	924,675	924,675	924,675
Transfers Out - General Fund	47,274	47,275	48,115	48,115	48,115	48,115	48,115
Total	1,481,110	1,436,919	1,484,064	1,653,807	1,693,586	1,693,586	1,693,586
<i>Use of General County Resources</i>	145,967	135,668	86,022	139,667	159,046	159,046	159,046
Staffing FTE	10.30	10.00	9.30	9.30	9.10	9.10	9.10

Douglas County, Oregon
Health and Social Services Fund
Senior Services

Department Detail

			Actual	Actual	Revised	Proposed	Approved	Adopted
			FY 16-17	FY 17-18	Budget	FY 19-20	FY 19-20	FY 19-20
					FY 18-19			
207-4050-2680-01	Senior Services Program Rev	Congregate Meals	44,526	42,579	47,200	37,500	37,500	37,500
207-4050-2680-02	Senior Services Program Rev	Home Delivered Meals	10,550	16,756	15,400	15,500	15,500	15,500
207-4050-2680-10	Senior Services Program Rev	Home Care	2,550	2,880	2,400	2,400	2,400	2,400
207-4050-3210-00	State/Fed-Sr/Disabled Div	General	64,544	58,852	65,838	78,233	78,233	78,233
207-4050-3210-01	State/Fed-Sr/Disabled Div	SSD Title 19 Reimbursement	56,099	82,601	108,489	108,489	108,489	108,489
207-4050-3210-03	State/Fed-Sr/Disabled Div	OAA IIIB Social Services	165,215	165,877	170,681	162,290	162,290	162,290
207-4050-3210-04	State/Fed-Sr/Disabled Div	OAA IIIC1 Congregate Meals	231,187	235,765	218,507	216,568	216,568	216,568
207-4050-3210-05	State/Fed-Sr/Disabled Div	OAA IIIC2 Home Delivered Meals	135,579	126,989	112,829	112,168	112,168	112,168
207-4050-3210-06	State/Fed-Sr/Disabled Div	USDA Cash-in-Lieu	72,652	74,856	77,896	78,924	78,924	78,924
207-4050-3210-07	State/Fed-Sr/Disabled Div	OAA IIID In-Home Service	0	2,198	0	9,954	9,954	9,954
207-4050-3210-15	State/Fed-Sr/Disabled Div	OAA IIIE Family Caregiver	91,999	43,724	12,694	41,340	41,340	41,340
207-4050-3210-16	State/Fed-Sr/Disabled Div	OAA IIIE FCG Meals	0	53,061	68,000	81,000	81,000	81,000
207-4050-3210-20	State/Fed-Sr/Disabled Div	VII B Elder Abuse Prevention	1,375	2,338	1,979	1,979	1,979	1,979
207-4050-3220-10	State/Fed-Adult/Family Ser Div	Title 19-Home Delivered Meals	34,773	32,407	34,650	42,000	42,000	42,000
207-4050-3310-00	State-Sr/Disabled Div	General	3,572	1,679	38,513	5,773	5,773	5,773
207-4050-3310-01	State-Sr/Disabled Div	Oregon Project Independence	104,566	106,705	107,832	109,578	109,578	109,578
207-4050-3310-02	State-Sr/Disabled Div	OPI Home Care Worker	210,622	246,128	286,952	282,770	282,770	282,770
207-4050-3310-03	State-Sr/Disabled Div	OPI-Meals	0	23,039	21,500	18,700	18,700	18,700
207-4050-3310-05	State-Sr/Disabled Div	ADRC Options Counseling	18,454	8,618	37,161	39,984	39,984	39,984
207-4050-3310-06	State-Sr/Disabled Div	ADRC Mental Health	20,752	8,387	26,464	20,000	20,000	20,000
207-4050-3310-07	State-Sr/Disabled Div	ADRC Alzheimer's	2,628	0	0	0	0	0
207-4050-3310-08	State-Sr/Disabled Div	ADRC Veterans	16,004	49,539	55,455	66,500	66,500	66,500
207-4050-3395-00	Local Assistance	General	11,450	11,225	0	0	0	0
207-4050-3840-xx	Contributions and Donations	Various	690	1,569	1,200	2,800	2,800	2,800
207-4050-3875-00	Expense Reimbursements	General	0	270	0	90	90	90
207-4050-3879-90	Miscellaneous	Subrogating Claim Recovery	1,464	0	0	0	0	0
Total Revenue			1,301,251	1,398,042	1,511,640	1,534,540	1,534,540	1,534,540

Douglas County, Oregon
 Health and Social Services Fund
 Senior Services

Department Detail

			Actual	Actual	Revised	Proposed	Approved	Adopted
			FY 16-17	FY 17-18	Budget	FY 19-20	FY 19-20	FY 19-20
					FY 18-19			
207-4050-4000-00	Regular Employees	General	319,840	330,928	369,985	383,357	383,357	383,357
207-4050-4030-00	Temporary Employees	General	31,240	27,956	26,000	26,000	26,000	26,000
207-4050-4500-00	PERS	General	82,172	97,031	112,209	142,496	142,496	142,496
207-4050-4510-00	Social Security	General	26,447	26,562	30,293	31,316	31,316	31,316
207-4050-4520-00	Workers' Compensation	General	2,632	2,692	2,970	3,071	3,071	3,071
207-4050-4520-01	Workers' Compensation	Workers Comp Claims	1,120	2,000	0	0	0	0
207-4050-4530-00	Medical and Dental Insurance	General	105,105	103,600	134,400	130,463	130,463	130,463
207-4050-4540-00	Unemployment	General	3,161	5,377	3,960	4,093	4,093	4,093
Total Personnel Services			571,717	596,146	679,817	720,796	720,796	720,796
207-4050-5099-00	Other Professional Services	General	0	10,680	0	14,094	14,094	14,094
207-4050-5300-00	Health & Social Svcs Contracts	General	19,640	14,500	52,593	48,890	48,890	48,890
207-4050-5335-05	Senior Service Contracts	Food Services Contracts	200,267	201,101	214,780	202,800	202,800	202,800
207-4050-5335-07	Senior Service Contracts	Other Agency Food Service	18,046	16,000	16,000	16,000	16,000	16,000
207-4050-5335-10	Senior Service Contracts	Home Delivered Food Services	219,111	217,831	204,463	223,050	223,050	223,050
207-4050-5335-25	Senior Service Contracts	Legal Services	8,051	4,717	8,342	8,342	8,342	8,342
207-4050-5335-35	Senior Service Contracts	Family Caregiver	2,215	0	0	0	0	0
207-4050-5335-40	Senior Service Contracts	Options Counseling	2,700	0	0	0	0	0
207-4050-5370-10	Other Health/Welfare Contracts	Home Care Workers	210,622	246,128	286,952	282,770	282,770	282,770
207-4050-5790-55	Transport Costs	Volunteer Reimbursements	17,010	15,756	18,000	15,000	15,000	15,000
207-4050-6290-00	Software Purchases	General	324	0	0	0	0	0
207-4050-6290-10	Software Purchases	Software Updates/Maintenance	445	780	100	0	0	0
207-4050-6295-00	Equipment-Noninventory	General	4,003	2,382	2,700	2,960	2,960	2,960
207-4050-6299-00	Other Materials and Supplies	General	3,185	857	2,301	2,280	2,280	2,280
207-4050-6400-00	Land and Building Rent	General	46,716	46,944	46,944	47,994	47,994	47,994
207-4050-6450-02	Equipment/Vehicle Rent	Copy Machines	331	313	390	320	320	320
207-4050-6500-00	Interdept Vehicle Expense	General	11,551	12,388	8,430	9,660	9,660	9,660
207-4050-6510-00	Equip/Vehicle Main & Repair	General	0	0	90	50	50	50
207-4050-6510-02	Equip/Vehicle Main & Repair	Equipment Service Contracts	485	663	990	932	932	932
207-4050-6680-01	Communication	Telephone	9,925	10,665	11,580	10,390	10,390	10,390
207-4050-6720-01	Fire/Liability Insurance	Liability Ins Interdept Charges	5,964	6,090	11,000	12,500	12,500	12,500
207-4050-6730-00	Liability Claims	General	525	0	0	0	0	0
207-4050-6800-00	Laundry and Dry Cleaning	General	5,039	5,739	5,300	3,530	3,530	3,530

Douglas County, Oregon
 Health and Social Services Fund
 Senior Services

Department Detail

			Actual	Actual	Revised	Proposed	Approved	Adopted
			FY 16-17	FY 17-18	Budget	FY 19-20	FY 19-20	FY 19-20
					FY 18-19			
207-4050-6850-00	License and Permit Fees	General	1,920	1,920	4,050	1,921	1,921	1,921
207-4050-6920-00	Awards and Recognitions	General	0	264	270	0	0	0
207-4050-7300-00	Advertising/Publicity	General	7,514	4,573	6,100	3,800	3,800	3,800
207-4050-7400-00	Office Supplies and Expenses	General	2,959	3,469	4,080	3,135	3,135	3,135
207-4050-7410-00	Postage	General	1,289	1,282	1,330	1,110	1,110	1,110
207-4050-7500-00	Subscriptions & Periodicals	General	607	673	550	410	410	410
207-4050-7550-80	Travel	Mileage Reimbursement	4,670	2,522	3,650	1,740	1,740	1,740
207-4050-7560-00	Conventions, Schools, Seminars	General	7,529	5,057	6,240	3,967	3,967	3,967
207-4050-7580-00	Dues and Memberships	General	4,354	4,731	6,600	6,300	6,300	6,300
207-4050-7800-00	Legal Publication and Printing	General	128	952	1,250	0	0	0
207-4050-7820-00	Advisory Committee Expense	General	42	66	100	50	50	50
207-4050-7850-00	Pre-employment Testing	General	760	760	700	680	680	680
Total Materials and Services			817,927	839,803	925,875	924,675	924,675	924,675
207-4050-9500-01	Transfers Out	General Fund	47,275	48,115	48,115	48,115	48,115	48,115
Total Other Requirements			47,275	48,115	48,115	48,115	48,115	48,115
Total Expenditures			1,436,919	1,484,064	1,653,807	1,693,586	1,693,586	1,693,586

Douglas County, Oregon
 Health and Social Services Fund
 Senior Services Division

PERSONNEL SERVICES					
	Actual	Actual	Revised	Budget	
	FTE	FTE	Budget	FY 19-20	
	FY 16-17	FY 17-18	FTE	FTE	Amount
			FY 18-19		
Senior Services Director	1.00	1.00	1.00	1.00	65,716
Senior Services Case Manager	5.20	4.50	4.20	4.00	173,851
Senior Services Coordinator	1.00	1.00	1.00	1.00	31,396
Food Service Worker	1.10	1.10	1.10	1.10	26,682
Management Analyst 2	1.00	1.00	1.00	1.00	59,446
Department Assistant	0.70	0.70	1.00	1.00	26,266
Total Regular	<u>10.00</u>	<u>9.30</u>	<u>9.30</u>	<u>9.10</u>	<u>383,357</u>
Temporary					26,000
PERS		33.86%, 44.00%			142,496
Social Security		7.65%			31,316
Worker's Compensation		0.75%			3,071
Unemployment		1.00%			4,093
Medical & Dental Insurance		Varied			<u>130,463</u>
Total Personnel Services					<u><u>720,796</u></u>